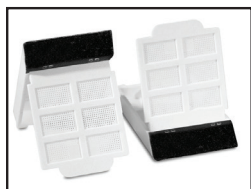
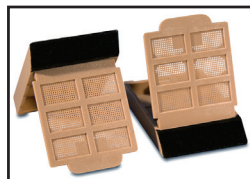


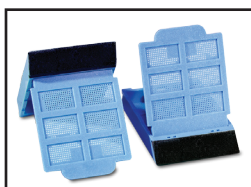
## ID Positive™ CL-Series Small Hole Biopsy Cassettes



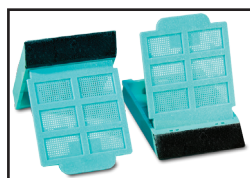
**Cat # G1-CSH-100WE**  
Description: White Small Hole Biopsy Cassette



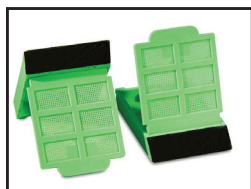
**Cat # G1-CSH-100TN**  
Description: Tan Small Hole Biopsy Cassette



**Cat # G1-CSH-100BE**  
Description: Blue Small Hole Biopsy Cassette



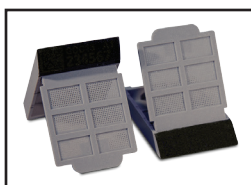
**Cat # G1-CSH-100AA**  
Description: Aqua Small Hole Biopsy Cassette



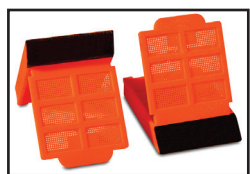
**Cat # G1-CSH-100GN**  
Description: Green Small Hole Biopsy Cassette



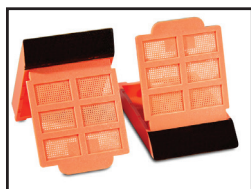
**Cat # G1-CSH-100LC**  
Description: Lilac Small Hole Biopsy Cassette



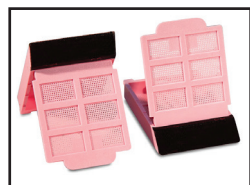
**Cat # G1-CSH-100GY**  
Description: Gray Small Hole Biopsy Cassette



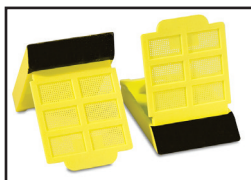
**Cat # G1-CSH-100OE**  
Description: Orange Small Hole Biopsy Cassette



**Cat # G1-CSH-100PH**  
Description: Peach Small Hole Biopsy Cassette



**Cat # G1-CSH-100PK**  
Description: Pink Small Hole Biopsy Cassette



**Cat # G1-CSH-100YW**  
Description: Yellow Small Hole Biopsy Cassette

## How To Order:

ID/Positive Cassettes are packaged by the case: 20 cassettes/stack, 72 cassette stacks/case (1440 cassettes/case total)

ID/Positive™ Tissue & Biopsy Cassettes 20 cassettes stack; 72 cassette stacks/case (1440 cassettes/case)				
Colors	Tissue Processing Embedding	Biopsy Processing Embedding (Large Holes)	Biopsy Processing Embedding (Small Holes)	Chambered Processing Embedding (Small Holes)
● WHITE	G1-CTP-100WE	G1-CBP-100WE	G1-CSH-100WE	G1-CSC-100WE
● BLUE	G1-CTP-100BE	G1-CBP-100BE	G1-CSH-100BE	G1-CSC-100BE
● GREEN	G1-CTP-100GN	G1-CBP-100GN	G1-CSH-100GN	G1-CSC-100GN
● GRAY	G1-CTP-100GY	G1-CBP-100GY	G1-CSH-100GY	G1-CSC-100GY
● PINK	G1-CTP-100PK	G1-CBP-100PK	G1-CSH-100PK	G1-CSC-100PK
● PEACH	G1-CTP-100PH	G1-CBP-100PH	G1-CSH-100PH	
● YELLOW	G1-CTP-100YW	G1-CBP-100YW	G1-CSH-100YW	G1-CSC-100YW
● TAN	G1-CTP-100TN	G1-CBP-100TN	G1-CSH-100TN	G1-CSC-100TN
● AQUA	G1-CTP-100AA	G1-CBP-100AA	G1-CSH-100AA	G1-CSC-100AA
● LILAC	G1-CTP-100LC	G1-CBP-100LC	G1-CSH-100LC	G1-CSC-100LC
● ORANGE	G1-CTP-100OE	G1-CBP-100OE	G1-CSH-100OE	G1-CSC-100OE

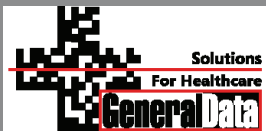
### More Information

844.643.1129

[www.general-data.com/hc](http://www.general-data.com/hc)

*General Data Healthcare helps labs enhance productivity and improve workflow with innovative products, solutions and support that focus on delivering better patient safety & care.*

©2017 General Data Healthcare, Inc. All rights reserved. Specifications are current at the time of publication; however, they are subject to change without notification. All trademarks and registered trademarks are property of General Data Healthcare, Inc., Cincinnati, Ohio, USA.



General Data Healthcare, Inc.  
4043 McMann Road, Cincinnati, OH 45245  
844.643.1129

Email: [talktous@general-data.com](mailto:talktous@general-data.com)  
Web: [www.general-data.com/healthcare](http://www.general-data.com/healthcare)

Service:  
PH: 800.245.5029  
Email: [customersupport@general-data.com](mailto:customersupport@general-data.com)